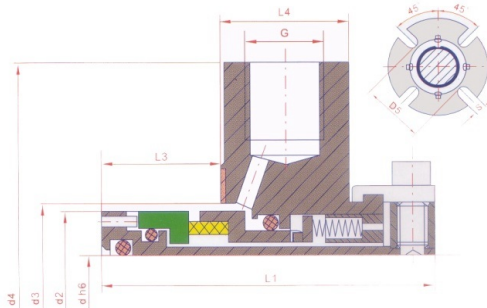
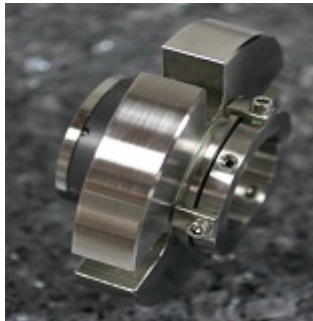


HARD FACED SINGLE CARTRIDGE SEAL

- ▶ ASP Stainless Steel Single Cartridge Seal
- ▶ Balanced
- ▶ Multi-Directional
- ▶ Flush Connection included
- ▶ SC / SC Hard Face Standard
- ▶ ASP SCS single cartridge seals are fully pre-assembled

They are balanced and can be used in either direction of rotation.

The energizing springs hold the seal faces together from outside the stuffing box, keeping them from clogging and losing compression. By making all of our seal faces "hard faces" your seals will last. In the short run our ASP SCS will help reduce your mechanical seal cost. In the long run your maintenance and clean up expenses are reduced. Our seals protect your bearings, and your budget.



SEAL SIZE (Inches)	d2	d3		d4	L1	L3	L4	d5	S	G (Inches)
		min.	max.							
1	1.69	1.73	2.01	4.13	2.64	0.969	1	2.44	0.551	1/4
1.125	1.81	1.85	2.05	4.13	2.64	0.969	1	2.44	0.551	1/4
1.18	1.89	1.93	2.2	4.13	2.64	0.969	1	2.56	0.551	1/4
1.375	1.97	2.01	2.24	4.33	2.64	0.969	1	2.64	0.551	1/4
1.38	2.09	2.13	2.4	4.45	2.64	0.969	1	2.76	0.551	1/4
1.5	2.2	2.24	2.6	4.84	2.64	0.969	1	2.95	0.551	3/8
1.57	2.28	2.32	2.68	4.84	2.64	0.969	1	2.95	0.63	3/8
1.63	2.36	2.42	2.78	5.24	2.64	0.969	1	3.15	0.63	3/8
1.75	2.46	2.52	2.87	5.43	2.64	0.969	1	3.19	0.63	3/8
1.875	2.58	2.64	2.95	5.43	2.64	0.969	1	3.31	0.63	3/8
2	2.68	2.72	3.07	5.83	2.64	0.969	1	3.43	0.63	3/8
2.125	2.87	2.91	3.27	5.83	2.64	0.969	1	3.54	0.709	3/8
2.375	3.07	3.11	3.58	6.18	2.64	0.969	1	4.02	0.709	3/8
2.5	3.27	3.33	3.88	6.42	2.64	0.969	1	4.29	0.709	3/8
2.75	3.66	3.74	4.25	7.01	2.64	0.969	1	4.65	0.709	3/8
3	3.94	4	4.65	7.48	3.31	1.05	1.1	5.08	0.709	3/8
3.125	4.19	4.25	4.88	7.68	3.31	1.05	1.1	5.31	0.709	3/8
3.375	4.31	4.37	5.04	7.8	3.31	1.05	1.1	5.47	0.866	3/8
3.5	4.56	4.63	5.31	8.07	3.31	1.05	1.1	5.71	0.866	3/8
3.75	4.69	4.75	5.43	8.19	3.31	1.05	1.1	5.83	0.866	3/8
4	4.94	5	5.67	8.58	3.31	1.05	1.1	6.06	0.866	3/8

